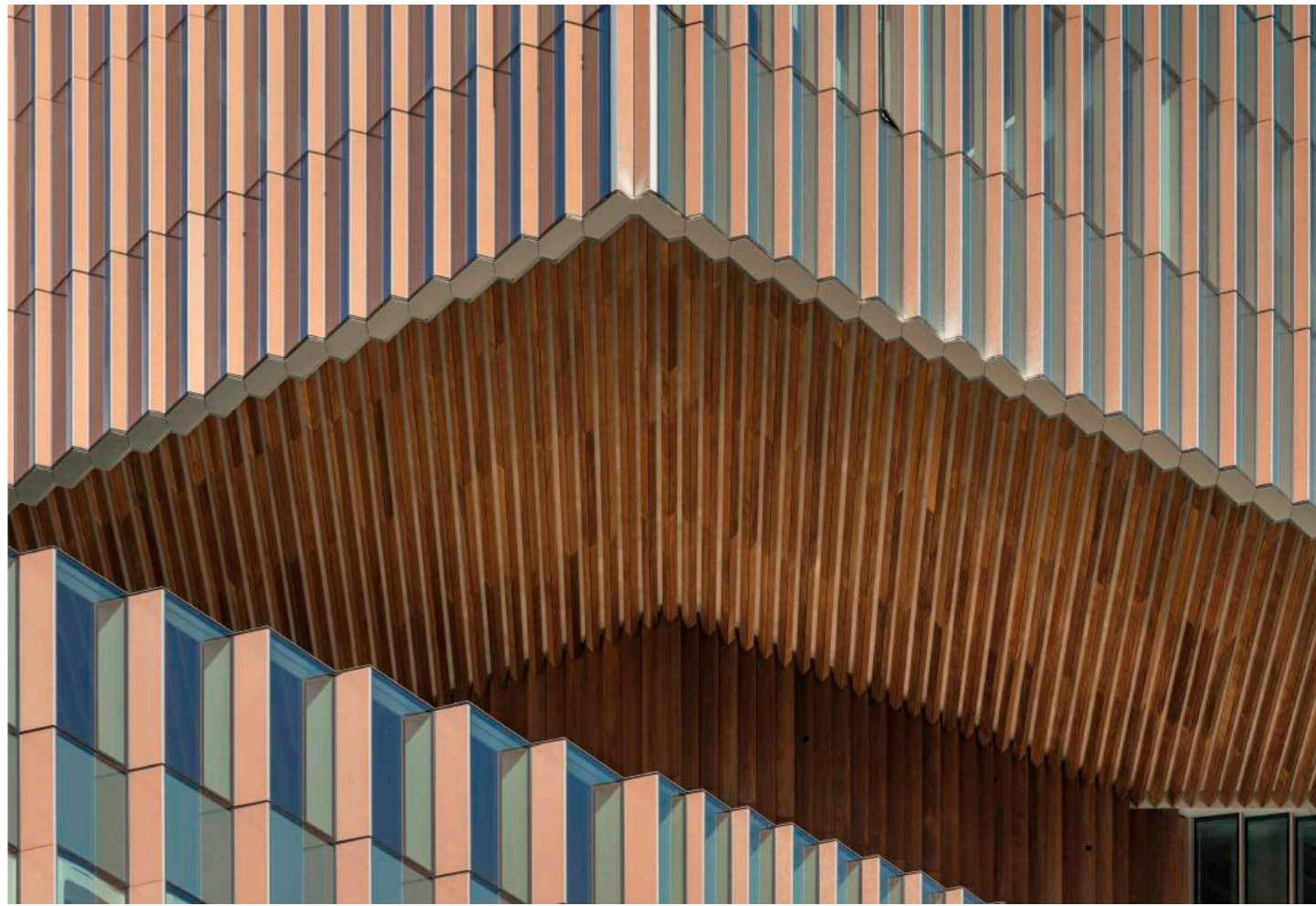
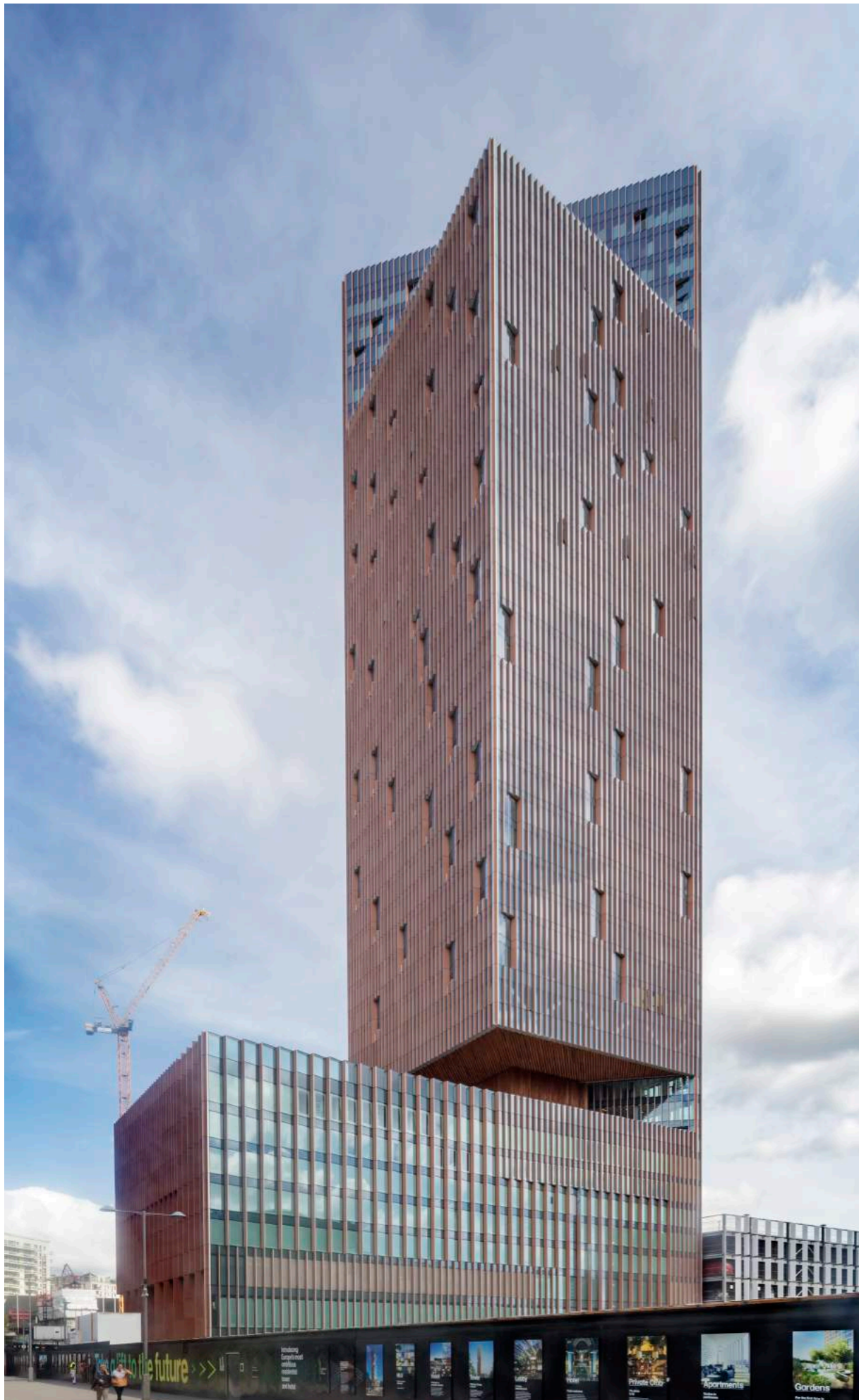
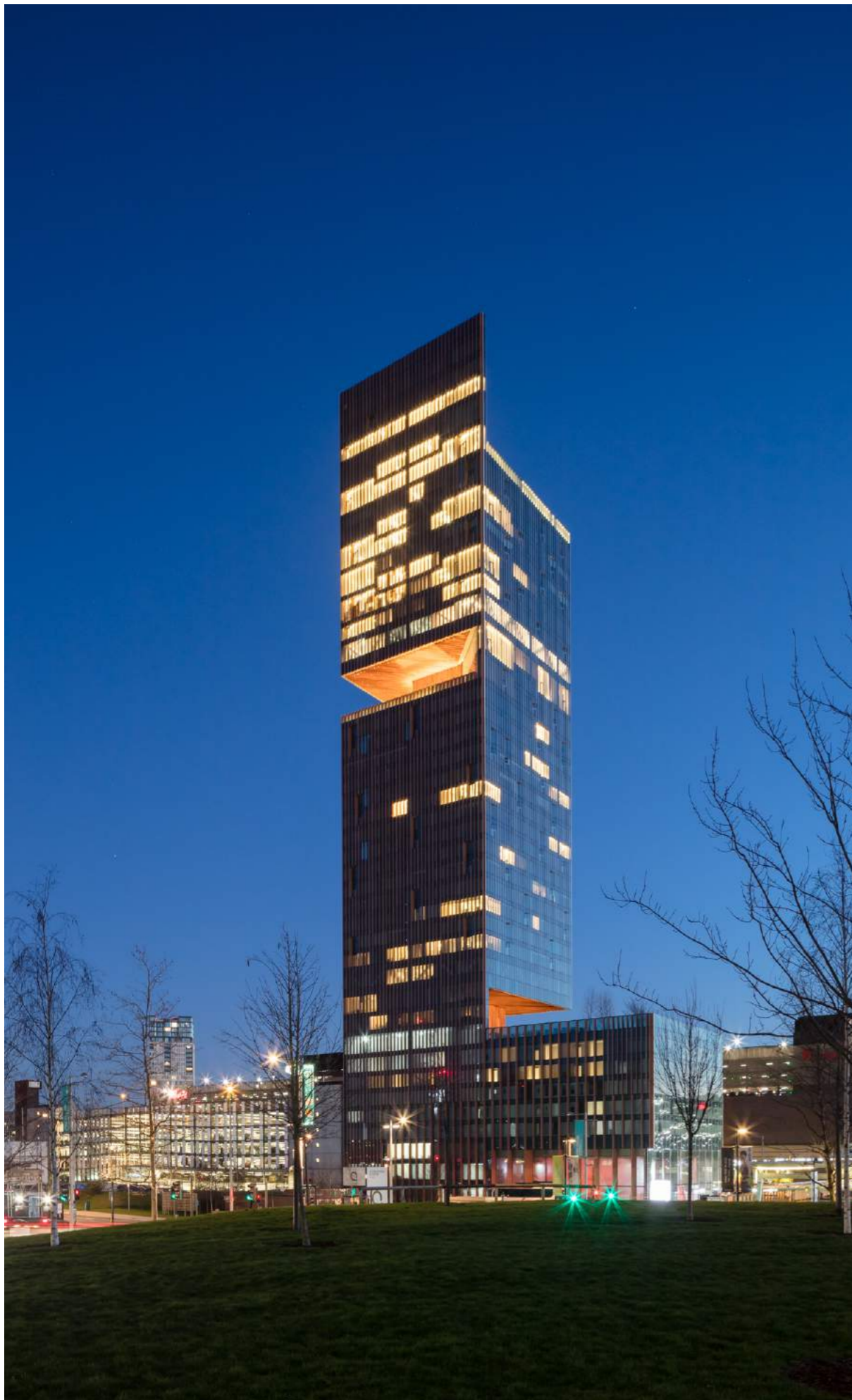


**THE
STRATFORD**

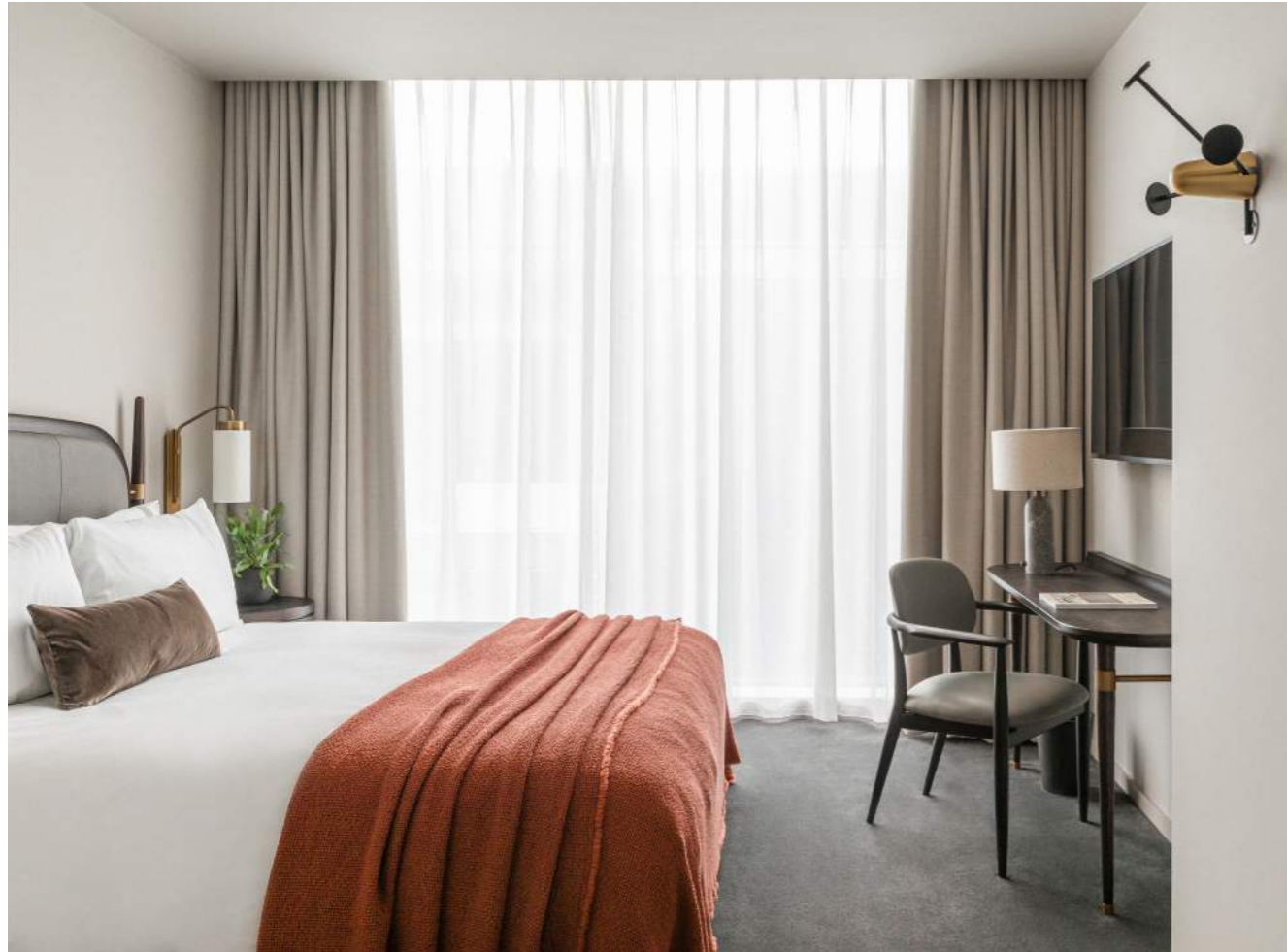








THE STRATFORD HOTEL



THE STRATFORD HOTEL



ROOMS

Standard Room

NO

36

SIZE

23 sqm

Medium Room

41

25 sqm

Large Room

33

28 sqm

Larger Room

15

32 sqm

Double Double

6

35 sqm

Stratford Studio

9

45 sqm

Manhattan Studio

5

65 sqm



AMENITIES

- Valet parking / Car parking
- 24-hour concierge
- 24-hour gym
- Allegra Restaurant & Bar on the 7th Floor
- The Stratford Brasserie, Bar & Lounge on the Ground Floor
- Sky Gardens
- The Mezzanine
- 4 Event rooms
- Private dining space
- Bicycle Storage
- Shuttle service from City Airport & Canary Wharf
- Cultural curated programming

EVENT SPACES

The Stratford Hotel & Lofts is a sensational invitation to connect, collaborate and belong – from pop-up parties and supper clubs at the sky gardens to film screenings and business meetings in our state-of-the-art work spaces.

Located at mezzanine level, The Stratford’s four event studios are equipped with 5G Wi-Fi, flat-screen TVs, digital projectors for Mac and PC and multi-zone audio and portable projection screens.

STUDIO 1&2

EVENT SPACE	STUDIO 1	STUDIO 2	STUDIO 1&2 COMBINED
M ²	30m ²	30m ²	60m ²
BOARDROOM	12	12	24
THEATRE	35	35	70
CABARET	15	15	30
CLASSROOM	23	23	46
U-SHAPE	12	12	20
COCKTAIL / RECEPTION	35	35	70
DINNER	26	26	50

MEZZANINE CLUB

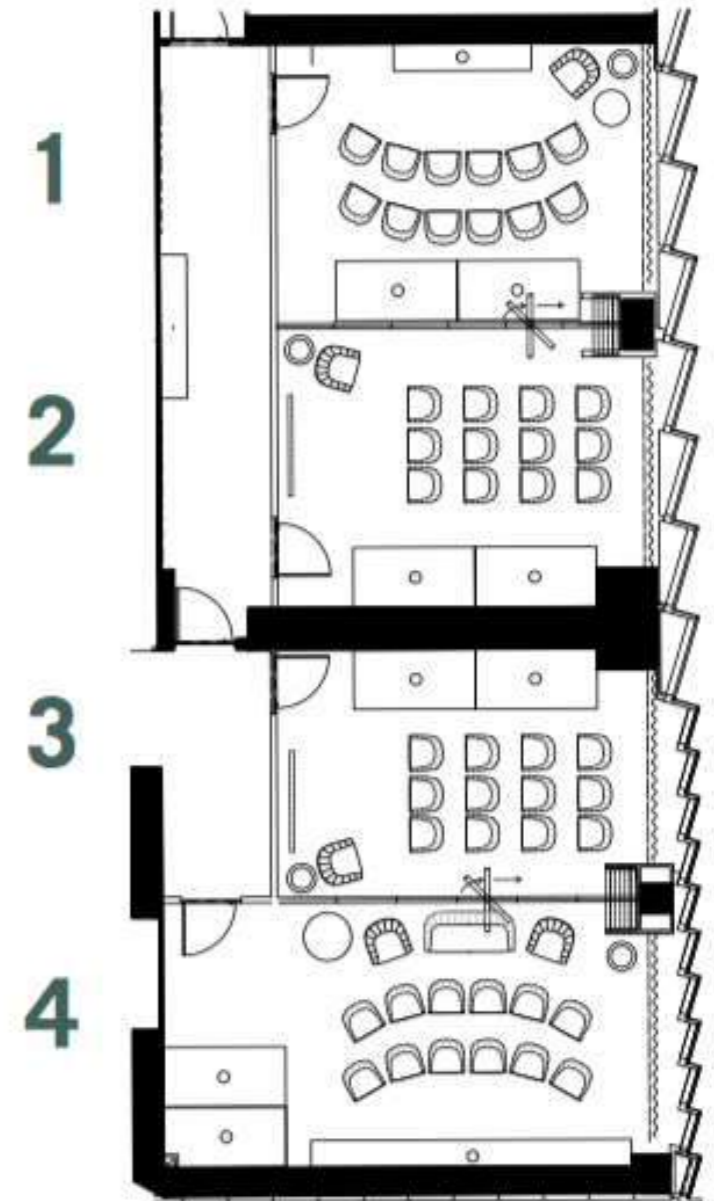
M ²	727m ²
COCKTAIL / RECEPTION	110
DINNER	110

STUDIO 3&4

EVENT SPACE	STUDIO 3	STUDIO 4	STUDIO 3&4 COMBINED
M ²	27m ²	37.50m ²	64.50m ²
BOARDROOM	12	12	24
THEATRE	32	44	76
CABARET	15	20	40
CLASSROOM	20	28	49
U-SHAPE	12	20	30
COCKTAIL / RECEPTION	32	44	76
DINNER	24	33	56

ALLEGRA SKY GARDEN

M ²	272m ²
BOARDROOM	12
COCKTAIL / RECEPTION	270





THE STRATFORD GYM



THE STRATFORD BRASSERIE



THE MEZZANINE

The Mezzanine is a destination in itself. By day, a lounge bar to work, relax, meet and entertain. By night, the curtains are drawn and the DJs play late in this after-hours club.



ALLEGRA



“LONDON’S SEXIEST SKYSCRAPER”

- The Sunday Times Style

THE STRATFORD LOFTS



LOFT TYPE

NO

Loft	10
1 Bed Loft	54
1 Bed Loft + Den	36
1 Bed Double Height Loft	30
1 Bed Double Height Loft + Den	8
2 Bed Loft	21
2 Bed Loft + Den	3
2 Bed Double Height Loft	3
2 Bed Double Height Loft + Den	4
2 Bed Transfer Loft	8
3 Bed Double Height Loft	1
3 Bed Duplex Loft	4

AMENITIES

- Modern, open-plan studios, 1, 2, and 3- bed fully furnished and serviced apartments for both short and long-term stays
- 24-hour room service, housekeeping, dry cleaning, grocery stocking, and concierge service available
- Sleek, generously proportioned interior-designed apartments, featuring oak flooring, underfloor heating, air cooling, integrated storage and bespoke furniture
- Floor-to-ceiling windows harvest natural light with unparalleled views of London
- High-spec kitchens with premium appliances and American-style fridge-freezer

THE STRATFORD LOFTS



THE STRATFORD LOFTS



THE STRATFORD LOFTS



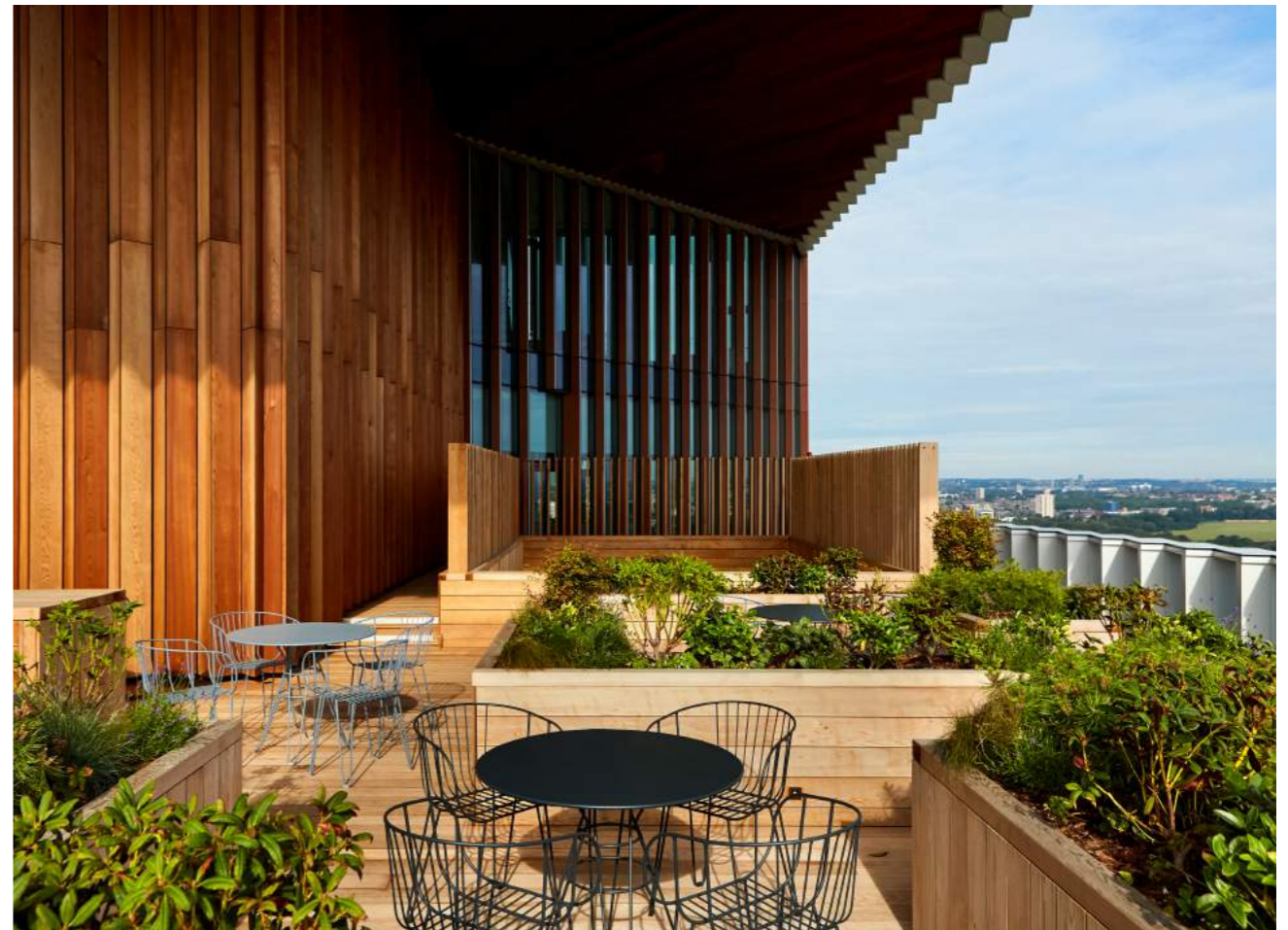
**“WITH ITS DOUBLE CANTILEVERS AND
SERRATED FAÇADE,
MANHATTAN LOFT GARDENS IS THE MOST
STRIKING TOWER FOR MILES AROUND.”**

- Wallpaper*

SKY GARDENS



SKY GARDENS



CULTURAL CALENDAR

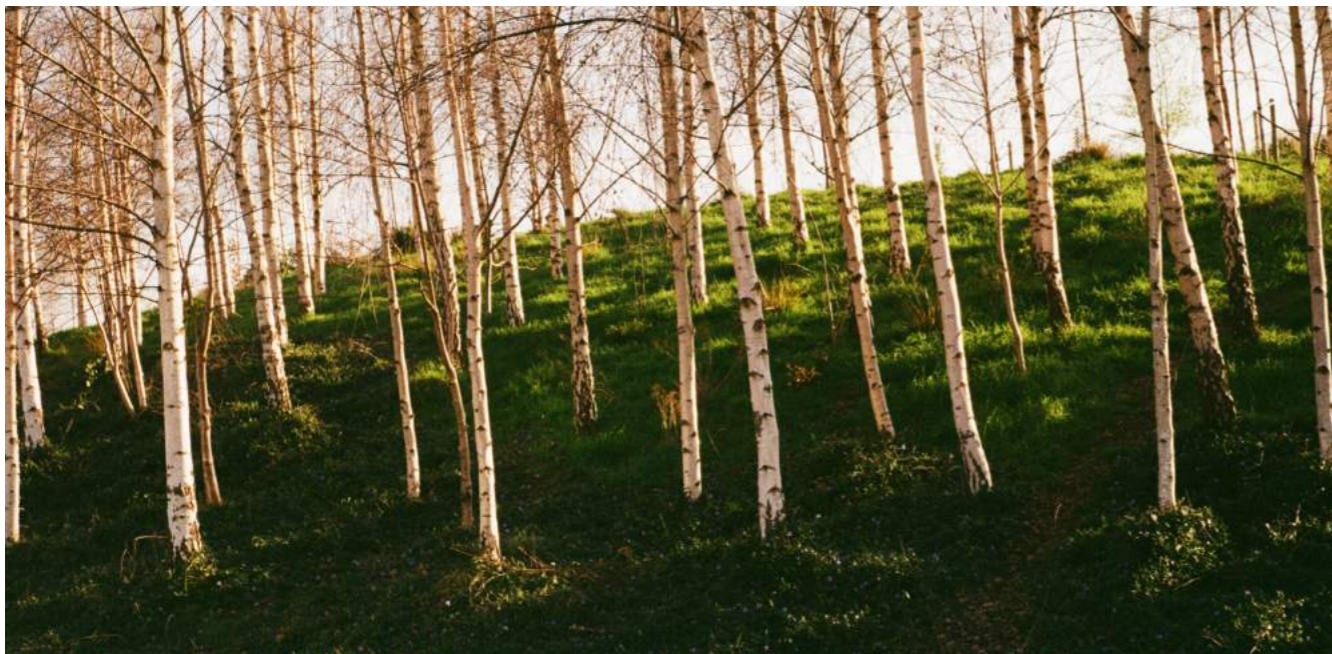


“ALL EYES ARE ON STRATFORD - E20 IS LONDON'S HIPPEST POSTCODE RIGHT NOW. THE V&A, SADLER'S WELLS AND THE LONDON COLLEGE OF FASHION, ARE SETTING THE STAGE FOR A NEW FASHION AND ARTS HUB.”

- British Vogue

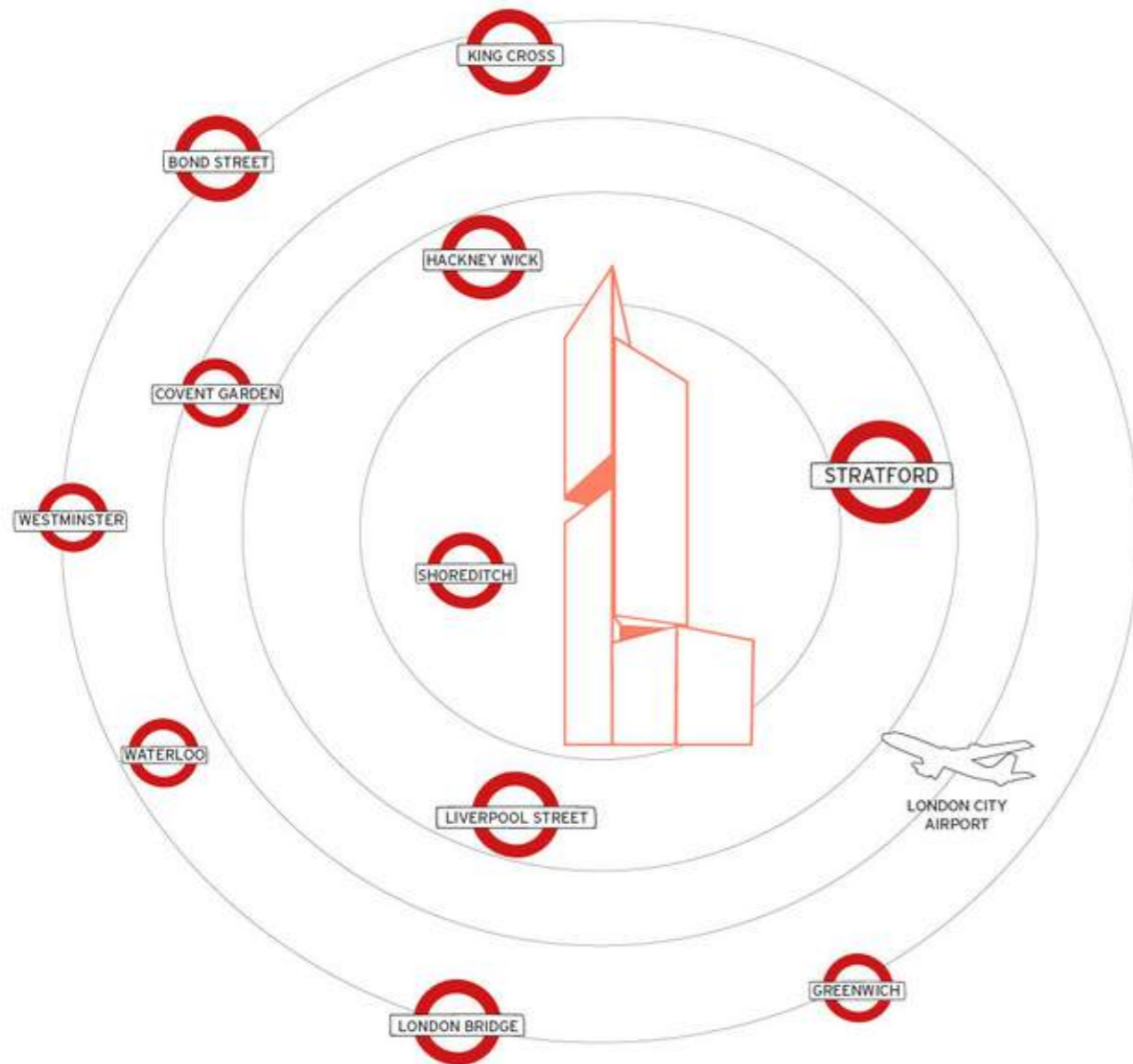
LOCATION

Staying at The Stratford hotel and lofts means world-class food, culture, retail and entertainment right on your doorstep. The park's 560 acres of waterways, cycle trails, cafes and bars are already home to the London Stadium, Aquatics Centre and innovative tech hub, Here East. Soon they'll be joined by some of the world's most iconic institutions – from the V&A, Sadder's Wells and Madison Square Gardens to the BBC Symphony Orchestra, UCL and London College of Fashion.





HOW TO GET THERE



06 MINS to St Pancras International (King's Cross) by Speed Rail

11 MINS to Liverpool Street Station via Central Line (Tube)

12 MINS to Canary Wharf via DLR Line (Tube)

18 MINS to Bond Street via Jubilee Line (Tube)

20 MINS to London City Airport by train

40 MINS to Heathrow Airport via Queen Elizabeth Line (Tube opening soon)

THE STRATFORD

Queen Elizabeth Olympic Park
20 International Way
London E20 1FD

thestratford.com
[@thestratford](https://www.instagram.com/thestratford)